

Portfolio Managers:

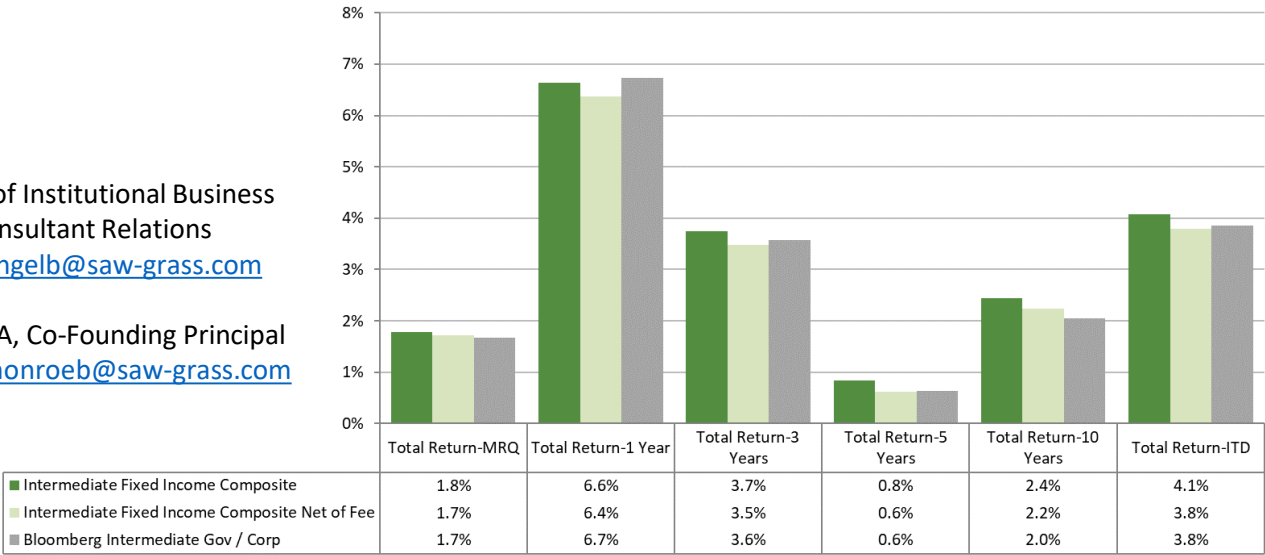
David Furfine, CFA
Liridon Gila, CFA
David Siegel, CFA

Sales Contacts:

Brian Engel, Head of Institutional Business
Development & Consultant Relations
(904) 493-5506 / engelb@saw-grass.com

Brian Monroe, MBA, Co-Founding Principal
(904) 493-5505 / monroeb@saw-grass.com

PERFORMANCE



Note: Returns for periods of one year or longer are annualized.

INVESTMENT PHILOSOPHY

Objective:

To provide strong risk-adjusted returns in all market environments as well as relative to a comparable benchmark and our peers.

Product Description:

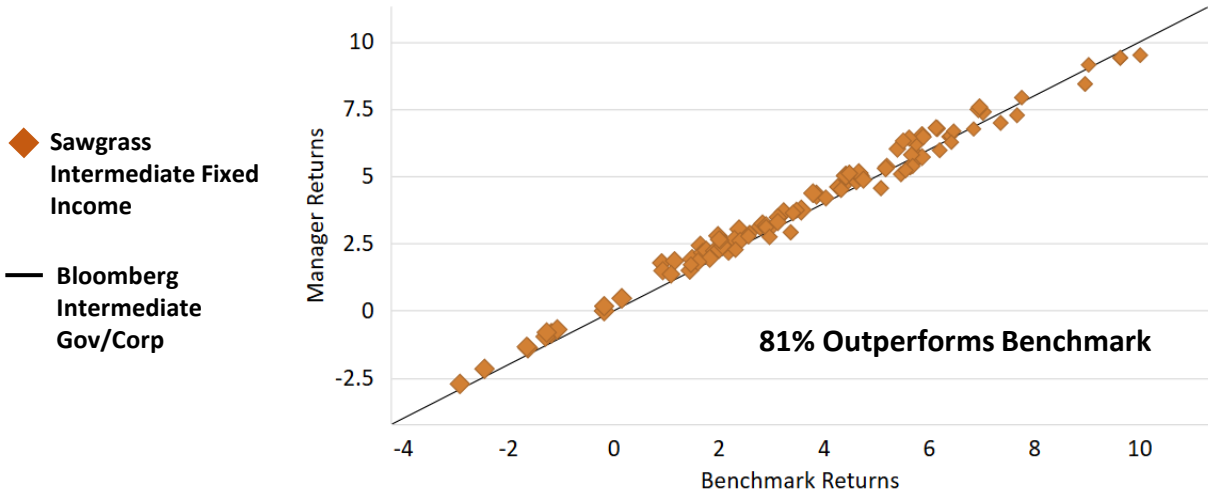
- Intermediate strategy focusing on U.S. Treasury and Agency notes and investment-grade corporates.
- BBB securities within the product are limited to benchmark weight.
- Effective duration is maintained within 20% of benchmark.
- Alpha is derived from four main sources: duration, yield curve, sector allocation, and security selection.

Investment Process:

Our investment process forms the foundation of a disciplined and consistent approach to portfolio construction:

- Interest rate and yield curves are evaluated by reviewing current and historical market factors.
- Sector analysis is accomplished by determining relative value among sectors incorporating fundamental and technical factors.
- Security selection is achieved by screening the universe with a proprietary relative value model, comparing credit quality of an issuer's fundamentals based on multiple financial metrics and spreads.
- An optimal portfolio is constructed by combining idea generation with specific client portfolio guidelines.

Manager Consistency – Rolling 3 Year*



Supplemental Information. Inception: 3/31/1998. *Universe Source: Nasdaq eVestment using monthly calculations as of 6/30/2025. Composite returns shown gross of fees. Universe: eVestment US Intermediate Duration Gov/Credit Fixed Income

Intermediate Fixed Income

6/30/2025



	<u>Portfolio</u>	<u>Intermediate G/C Index</u>
Yield to Maturity (%)	4.24	4.10
Effective Duration (<u>Yrs</u>)	3.73	3.77
Effective Maturity (<u>Yrs</u>)	4.41	4.28
Quality Rating	Aa3	Aa3
Coupon Rate	4.06	3.53
Convexity	0.07	0.10

PERFORMANCE DISCLOSURES

Sawgrass Asset Management, LLC. (Sawgrass) claims compliance with the Global Investment Performance Standards (GIPS®) and has prepared and presented this report in compliance with the GIPS® standards. Sawgrass has been independently verified for the periods 31 March 1998 through 31 December 2022. The verification report is available upon request. A firm that claims compliance with the GIPS standards must establish policies and procedure for complying with all the applicable requirements of the GIPS standards. Verification provides assurance on whether the firm's policies and procedures related to composite and pooled fund maintenance, as well as the calculation, presentation, and distribution of performance, have been designed in compliance with the GIPS standards and have been implemented on a firm-wide basis. Verification does not provide assurance on the accuracy of any specific performance report. GIPS® is a registered trademark of CFA Institute. CFA Institute does not endorse or promote this organization, nor does it warrant accuracy or quality of the content contained herein.

Sawgrass is a 100 percent employee-owned Registered Investment Advisor whose primary focus is to provide institutional investment management services.

Gross returns do not reflect the deduction of investment advisory fees but do include transaction fees. Gross and net returns include the reinvestment of all dividends and income. Net of fee performance was calculated by reducing the actual management fee charged to clients, or if part of a balanced account by reducing the highest management fee charged, in accordance with the Intermediate Fixed Income strategy fee schedule. Prior to 12/31/2015, the highest management fee was utilized to calculate net-of-fee performance.

Performance is in U.S. dollars. A comprehensive list and description of the firm's composites and limited distribution pooled funds, and additional information regarding policies for valuing investments, calculating performance, and preparing compliant presentations are available upon request.

Past performance does not guarantee future results. Investments are subject to risk and may lose value.

Information Specific to the Intermediate Fixed Income Composite: As of 6/30/2025, this composite was comprised of 4 accounts valued at \$41.5 million. Assets in this product represent 2% of the firm's total assets under management. Total firm advisory model assets are \$1,006.9 million. The three-year standard deviation for this product and its benchmark was 4.7% and 4.6%, respectively. This composite's creation date was 3/31/98, and the composite's minimum account size is currently \$1 million.

The investment management fee schedule is available in Form ADV 2 as follows: 0.35% on the first \$30 million, 0.25% on the next \$50 million and 0.15% over \$80 million.

Composite Description: Accounts included are comprised of all actively managed fixed-income accounts with assets greater than \$1,000,000 that are managed with a mandate of Intermediate Fixed Income benchmarked to the BE Intermediate G/C Index. These accounts primarily invest in investment grade bonds with a one to ten year effective maturity range.

Intermediate Fixed Income Composite	2015	2016	2017	2018	2019	2020	2021	2022	2023	2024
Annual Total Return - Gross of Fees	1.1%	2.6%	3.0%	0.9%	7.2%	7.4%	-1.4%	-7.8%	5.5%	2.8%
Annual Total Return - Net of Fees	0.9%	2.5%	2.8%	0.7%	7.1%	7.2%	-1.6%	-7.9%	5.2%	2.5%
Bloomberg Intermediate Gov / Corp	1.1%	2.1%	2.1%	0.9%	6.8%	6.4%	-1.4%	-8.2%	5.2%	3.0%
Total Product Assets - Year End (MM)	\$197.4	\$219.6	\$286.5	\$325.9	\$387.3	\$438.6	\$469.5	\$39.1	\$45.8	\$47.3
Product Composite Assets - Year End (MM)	\$197.4	\$219.6	\$285.3	\$324.5	\$387.0	\$438.4	\$469.4	\$39.0	\$45.5	\$46.9
Product Advisory Model Assets - Year End (MM)	\$0.0	\$0.0	\$0.0	\$0.0	\$0.0	\$0.0	\$0.0	\$0.0	\$0.0	\$0.0
Total Firm Assets Under Advisement - Year End (Bln)	\$3.8	\$3.9	\$4.0	\$3.7	\$3.3	\$3.3	\$3.1	\$2.3	\$2.9	\$3.2
Total Firm Assets Under Management - Year End (Bln)	\$3.8	\$3.8	\$3.9	\$3.5	\$3.0	\$3.2	\$2.9	\$2.1	\$2.3	\$2.3
Total Firm Advisory Model Assets - Year End (Bln)	\$0.1	\$0.1	\$0.1	\$0.1	\$0.3	\$0.1	\$0.2	\$0.2	\$0.6	\$1.0
Percent of Firm's Assets	5.3%	5.8%	7.4%	9.2%	12.7%	13.6%	16.1%	1.8%	2.0%	2.1%
Number of Accounts	21	22	25	25	27	27	26	5	5	5
Dispersion - Gross	0.08%	0.27%	0.26%	0.15%	0.41%	0.28%	0.14%	0.12%	0.07%	0.16%
Volatility - 3 Year Rolling Net Std Dev Sawgrass	1.88	1.91	1.83	1.76	1.97	2.28	2.49	3.96	4.69	5.10
Volatility - 3 Year Rolling Std Dev Index	2.13	2.26	2.14	2.12	2.07	2.34	2.37	3.88	4.64	5.08
Inception Date	3/31/1998									

Benchmark Index Definition: The BE Intermediate G/C is an Index comprised of U.S. Dollar denominated investment grade bonds with a maturity between 1 and 10 years.

Dispersion Note: Effective 1/1/2023, dispersion calculated on an asset-weighted basis. Prior dispersion calculated on an equal-weighted basis.